

EMS ELECTIVES SHOWCASE STEAM

SATURDAY SCHEDULE

Security and Student Helpers need to report to MPR at 7:20 for set up

Check-in: 7:30-7:50am

Rotation 1: 7:50-8:30am

Rotation 2: 8:30-9:10am

Rotation 3: 9:10-9:50am

Lunch: 9:50-10:05am

Rotation 4: 10:10-10:50am

Rotation 5: 10:50-11:30am

Rotation 6: 11:30-12:10pm

Groups go back to MPR for Pick up

*This event is getting capped at 175 students, so they'll be at most 25 kids per rotation.

*You'll have about 40 mins per rotation.

*Each group will be assigned an ASB kid to stay with them, guide them to each class, and pass out lunches before letting them out to the quad.

*Check-in is happening in the MPR, ASB kids will guide their groups to your classes at 7:50am.

*Each group of kids will have name tags and a color dot matching the group they are in.

*There will be 2 campus sups to help with supervision.

*I'll have bells going on to help with rotatating.

Rotations

Dinger to Ramirez (rm 312)

Ramirez to Casey (rm 304)

Casey to Wiley (rm 211)

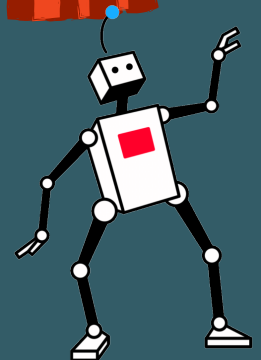
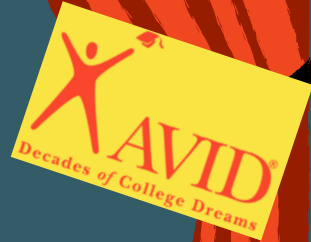
Wiley to Arellano (rm 301)

Arellano to Cardoza (rm 101)

Cardoza to Dinger (Band rm)

IHOLA!

PLUS
PEER LEADERS UNITING STUDENTS



EMS ELECTIVES SHOWCASE STEAM

SATURDAY SCHEDULE

Security and Student Helpers need to report to MPR at 7:20 for set up

Check-in: 7:30-7:50am

Rotation 1: 7:50-8:30am

Rotation 2: 8:30-9:10am

Rotation 3: 9:10-9:50am

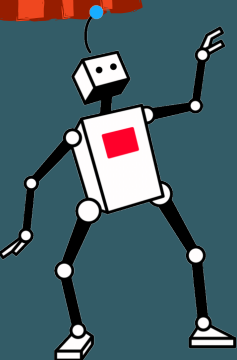
Lunch: 9:50-10:05am

Rotation 4: 10:10-10:50am

Rotation 5: 10:50-11:30am

Rotation 6: 11:30-12:10pm

Groups go back to MPR for Pick up



Rotations

Dinger to Ramirez (rm 312)

Ramirez to Casey (rm 304)

Casey to Wiley (rm 211)

Wiley to Arellano (rm 301)

Arellano to Cardozo (rm 101)

Cardoza to Dinger (Band rm)

